



About us

30 Long Years Of Telecom Service Operators in Mumbai

We want to become the most respected and preferred vendor in the telecom service industry and be a stepping in the growth of our customers and employees.

Our Mission

To become the most respected and preferred vendor in the telecom service industry and be a stepping in the growth of our customers and employees.

Our Vision

Commitment to provide best services
Reliability of promised services
flexibility to the customer requirements.
Dedication & Honesty to the work.

Our Commitment

- Maximize performance of networks and minimize their cost to services in the most competitive market.
- To offer most innovative and efficient solutions.
- To understand customer problems and goals.
- Be a part of the customer's team and work towards a common goal.
- Provide enough flexibility to deliver the most effective services to enable maximum return on the investment
- Complete transparency and develop customer confidence to manage the requirements.
- To become a core team member and integrated consultant to understand the problem and provide innovative solution.
- Run an extra mile to achieve the challenging deadlines without compromising the quality.

Our Expertise

- UBR –CMTS
- Access Point & Subscriber Unit
- Wireless Broadband Network
- MDF Copper Installation & Punching
- VHF/ UHF and Trunked Radio Systems
- RF Mast/ Pole Installation
- Fiber Cable Laying & Splicing
- Telecom Shelter Installation
- Microwave Commissioning & Installation
- EPABX Installation
- In – Building Solutions
- Turn Key Projects

UBR Access Point & Subscriber unit, Routers, WiFi Unit survey & installation.

- Xpress VPN/Road warrior installation.
- Last mile (any media) connectivity.
- Retail broadband/wireline/Centrex/del/SIP connections.
- GPON Installation.
- BRI/PRI Testing/
- ILL/DLC/NPLC/MPLS + SIP connectivity.
- In-building wiring with routing. SBT/SFT.
- Infra Utility.

MDF, EPBAX copper installation & punching.

- In telephony, a main distribution frame (MDF or main frame) is a signal distribution frame for connecting equipment (inside plant) to cables and subscriber carrier equipment.
- We conduct copper installation & punching of MDF with the latest available and best in class industrial standards.

Microwave commissioning & installation.

- Our range of telecom equipment installation and commissioning services is rendered on a timely basis and is very cost effective in nature. We do MW installation & commissioning on turnkey basis for telecom networks. Our installation team has experience of handling various telecom equipment and tools which are sourced from reputed companies like Alcatel-Lucent, IDEA, Airtel etc.

Wireless Broadband & Wi-Fi Network survey & installation

- Base station.
- Wireless Broadband CPES.
- 10/30-meter towers/masts.
- Base station electrical wiring.
- Network LAN cabling.
- Fibre splicing.
- Electric cabling and maintenance.

Turn key Projects

We provide site survey & design as part of our telecom turnkey solutions to our telecom customers:

- Survey the site to plan specific placing of various components of the structures/building.
- Test the soil for its bearing capacity.
- Layout plan preparation of the site.

EPABX, BG20, NPT1200,1250,1800 Series, Routers, Apollo Series 9608, 9603, 9623 Mux Installation

- With the purpose to provide utmost gratifications to the customers, we are rendering EPABX installation services. These services are implemented by some of the most well-informed experts of crew as per the set industry values and principles.
- Presented services are extremely venerated by our customers for their timely delivery, reasonable rate and hassle-free service.
- Installation of MUX system and termination of MDFs.
- Cable laying.
- Electrical wiring.
- E1 link termination.

VHF/UHF and Trunked Radio Systems installation.

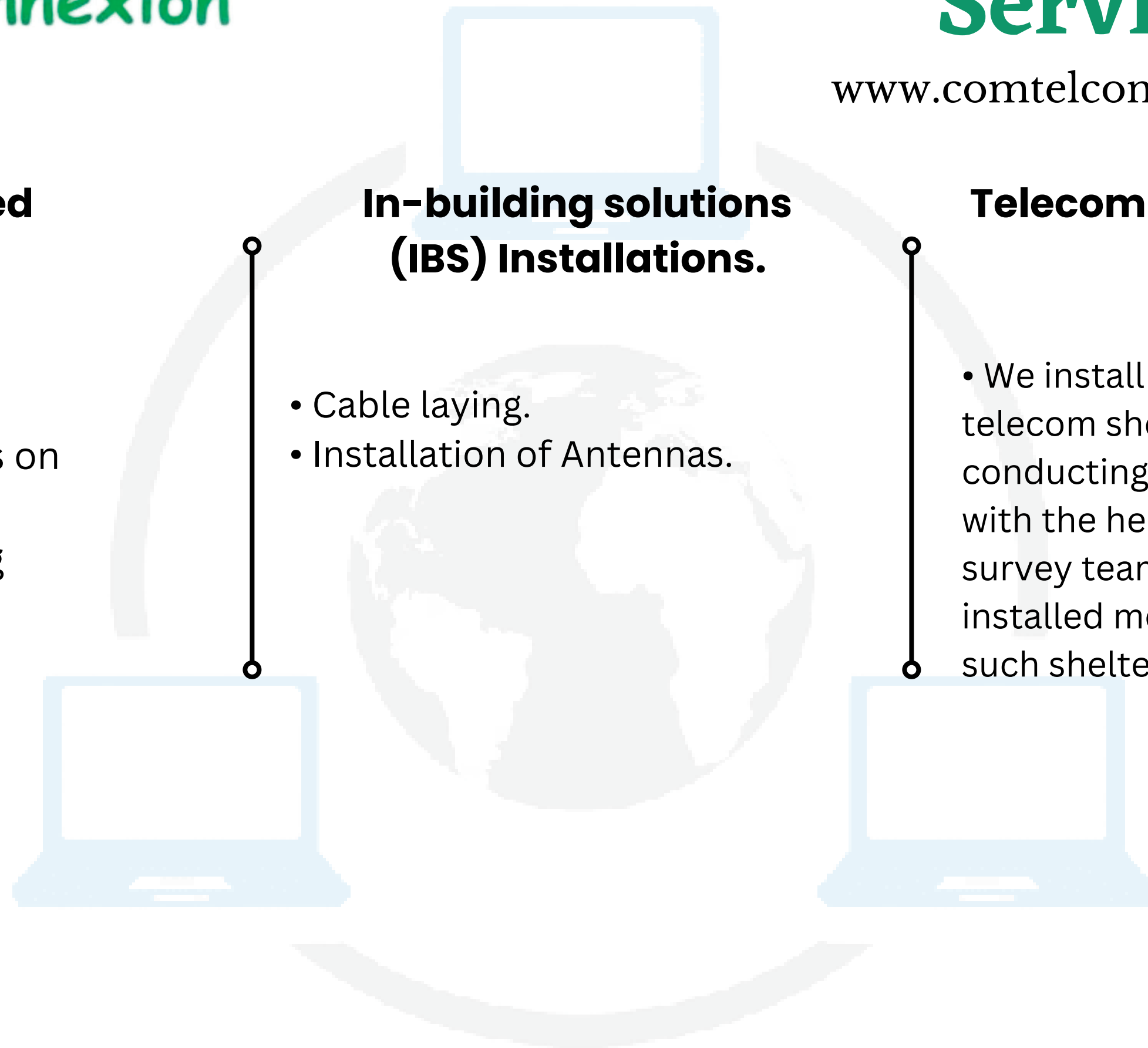
- Installation of radios.
- Installation of antennas on towers & vehicles.
- RF & power cable laying

In-building solutions (IBS) Installations.

- Cable laying.
- Installation of Antennas.

Telecom shelter & Infra site build-up installation.

- We install customized telecom shelter conducting site survey, with the help of onset survey team we have installed more than 550 such shelters.



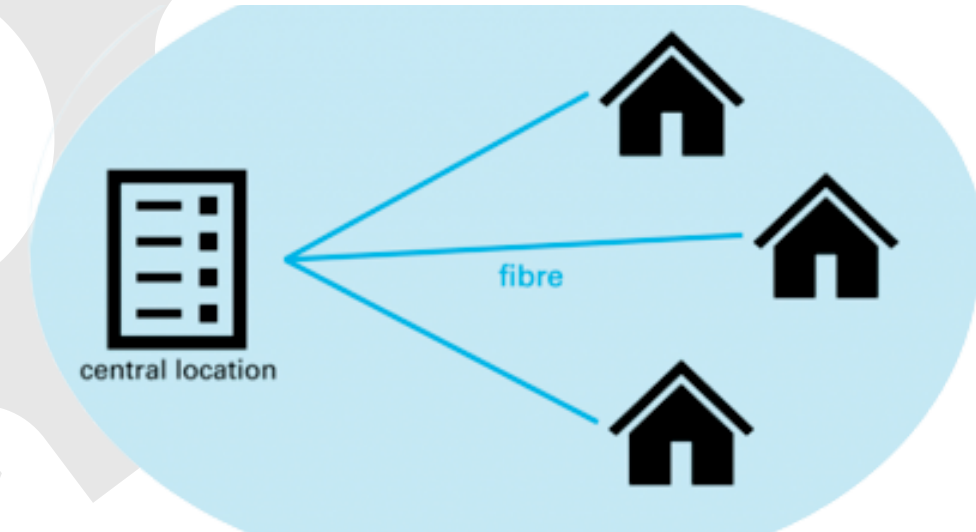
1



Airtel Xtreme FTTH deployment projects in Mumbai and Mumbai Suburban

- We are proficient in design and inventory preparation, cost analysis, cable route selection, and building a reliable fiber network with minimum O&M costs.
- Providing real-time problem solution, updating and modifying design & inventory as per customer requirements.
- Optical point terminal (OLT), Fiber management system (FMS), JC, and Optical distribution frame (ODF) setup. Primary and secondary splitter splicing. Gigabit passive optical network (GPON) and passive optical network (PON) distribution, power budget calculations, cable selection, route planning, Fat online AT, design, and inventory preparation are parameters we considered for setting up a fiber-optic network.

2



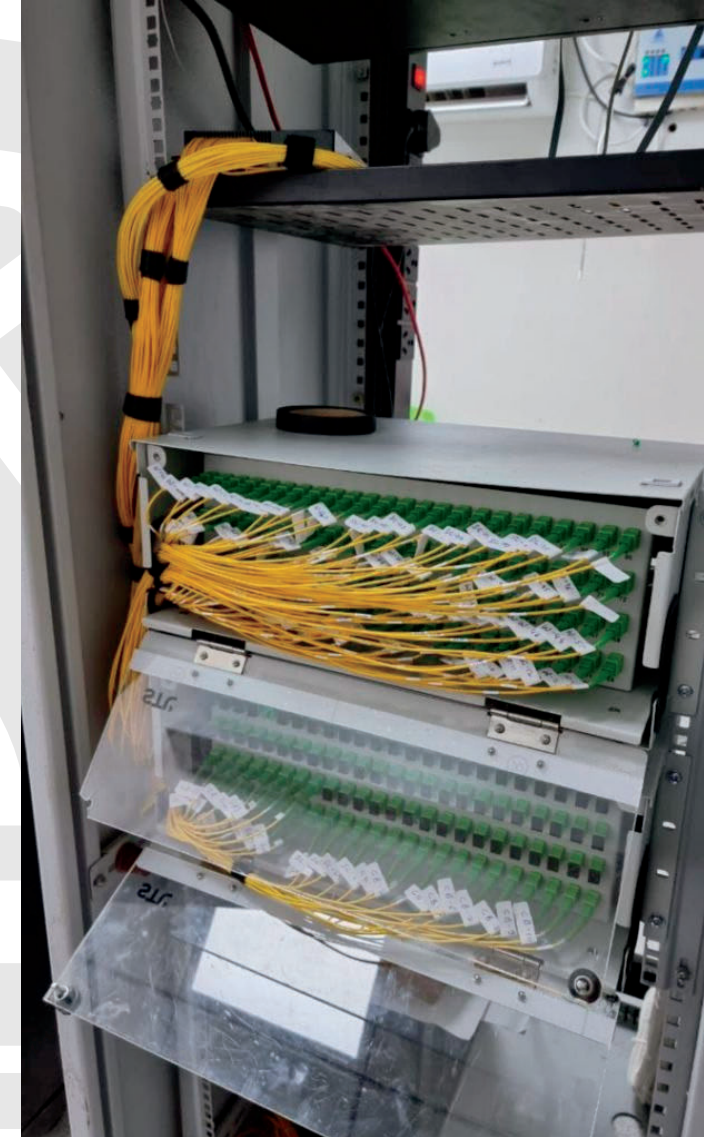
End-to-end mobility site Fiberization work.

- We have so far completed fiberization work at 500 sites in Mumbai and Mumbai Suburban region.
- Cable laying B2B, cable routing, power tapping, and fiber cable splicing at fat box bldg. and BTS bldg.



UGCM Mumbai Maintenance

- We handled 10,51,000 customers in Mumbai and Mumbai Suburban region.
- Diagnosis of cable fault, prevention of damages/cuts in cables.
- Fault & cut repairing of underground cables (primary, secondary and distribution cables).
- Shifting of cable, falling under road widening/expansion route.
- Burying of exposed U/G cables.
- Replacement of broken rusted P/SP/DP Metal box and modules.
- Door replacement of network elements, providing rubber lining inside the NEs.
- Shifting of NEs during road widening activity.
- Providing new earthing (if existing is missing) enhancement of earth value.



- Replacement of broken tag modules.
- Locking of P/SP/DP Doors.
- Fitting of hanging DP.
- Correct routing of jumper wires inside the NEs.
- Straightening of tilted P/SPs i.e., ramming of loose soil near the foundation.
- Jelly cleaning.
- Chamber height increasing, decreasing, concreting.
- GI Pipe laying for cable routing.
- Existing Pole, chamber, splitter box shifting.
- New chamber installation for O&M purpose, sand filling, electronic marker installation.
- JCB support for HDD cut restoration, trenching for cable cut restoration.
- Termination of cables in pillars, sub pillars in case of new installations.

4



Power & Utility projects In Mumbai/ Maharashtra & Goa

Earthing:

- Earth resistant check-up every month. Earth chamber cleaning after every three months.
- Earth chamber cleaning after every three months.
- Water salt liquid will be provided after every 3 months for bringing down earth resistant.
- Monthly cleaning of MSU.

Site count:

- RSU/DLC Site Maintenance in Mumbai & Suburban – 1000 Nos
- RSU/DLC Site Maintenance Pune – 265 Nos.

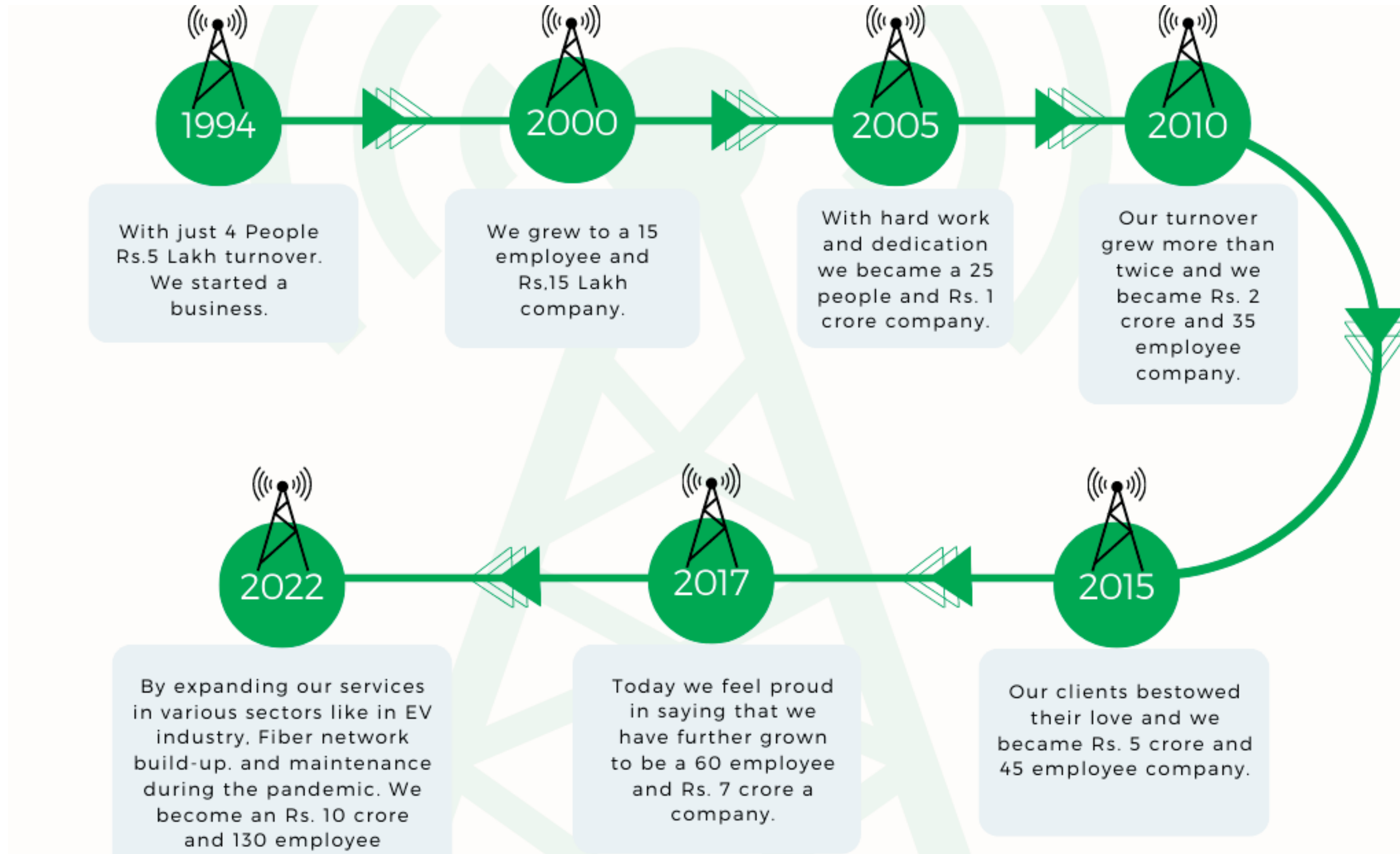
- O&M of Utilities viz. DG Sets, Air-conditioners, DC Power Plant, Battery Bank, UPS, Stabilizer, AMF panel, HT/LT panel, lighting, Fire detection system, Fire Extinguisher, Alarm system, MDF, VESDA, WLD, Electronic Rodent Repellent, CCTV, BMS. AMC for all the mentioned Passive Infra shall be placed with OEM of the respective equipment. Timely monitoring of AMC-related activities by the OEM and recording of all such activities to be carried out.
- Maintaining good rapport with the facilities team for obtaining permissions for cable entry during enhancement/augmentation of utility.
- Management for AMC visits / attending breakdowns.
- Earth value checking & maintaining value less than 1.0 Ohm.
- Maintaining the temperature in the switch room between 22 to 24 degrees Celsius or as per standards set by customers.
- Planning guidelines at MSU locations.
- Network uptime to be maintained at 100% efficiency.
- Checking UPS, SMPS & PAC every 2 Hrs & taking the reading.
- Checking & taking the reading of SMPS battery each cell voltage every day.
- Capturing the mains supply energy meter reading & recording in log book daily at a fixed time.
- Checking of Air conditioner & maintaining the temperature of power room, switch room other areas in MSC node as per recommendation

5

Electrical vehicles charger survey & installation



- We collaborate with experienced partners in the EV ecosystem to provide our customers with high-quality EVSE installation solutions.
- We firmly believe in delighting our customers with a customized home charging solution as per their requirements.





**04, Arun Niwas, Building No-3, Ground Floor,
Shastri Nagar, Old Dombivali,
Near R.B.I. Colony, Dombivali (W)
Thane - 421202**



**9820946472
9920201202**



**comtel.connexion@gmail.com
ravindra.chaudhary@comtelconnexion.com
rohit.chaudhary@comtelconnexion.com**

